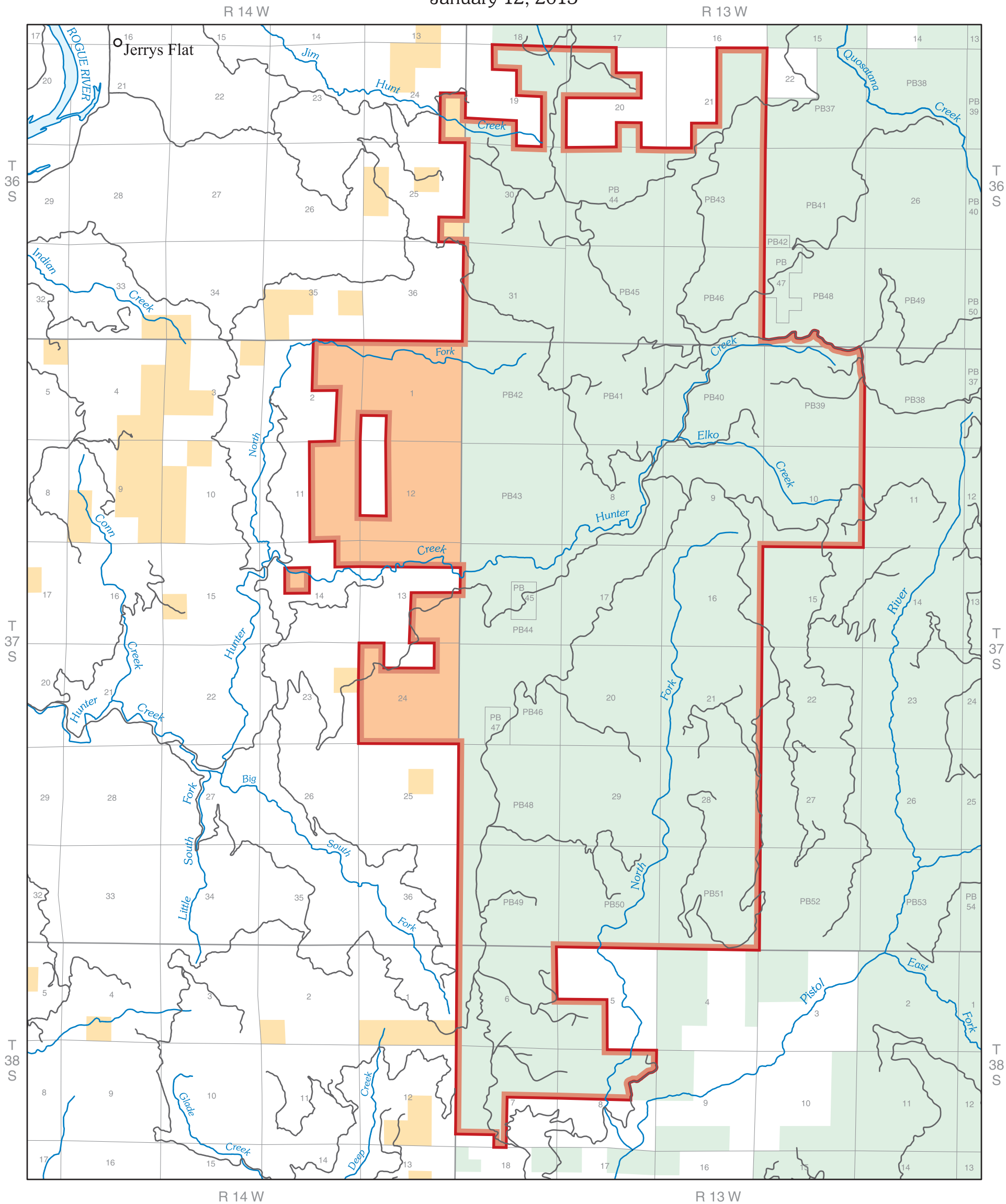


Hunter Creek and Pistol River Headwaters Mineral Withdrawal Proposal






Coos Bay District

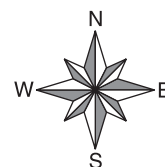
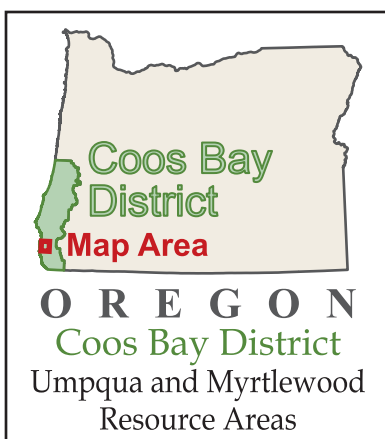
This map prepared at the request of Senator Ron Wyden and Representative Peter DeFazio

January 12, 2015

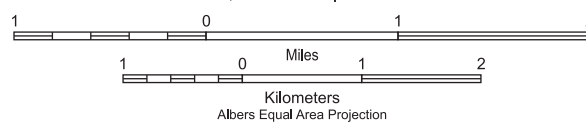


LEGEND

-  Road
-  Proposed Hunter Creek and Pistol River Headwaters Mineral Withdrawal
-  BLM Administered Land
-  Area of Critical Environmental Concern
-  US Forest Service Administered Land



Scale 1: 63,360 when plotted at 11x17



Kilometers
Albers Equal Area Projection
North American Datum of 1983

No warranty is made by the Bureau of Land Management as to the accuracy, reliability, or completeness of these data for individual or aggregate use with other data. Original data were compiled from various sources. This information may not meet National Map Accuracy Standards. This product was developed through digital means and may be updated without notification. M14-06-01