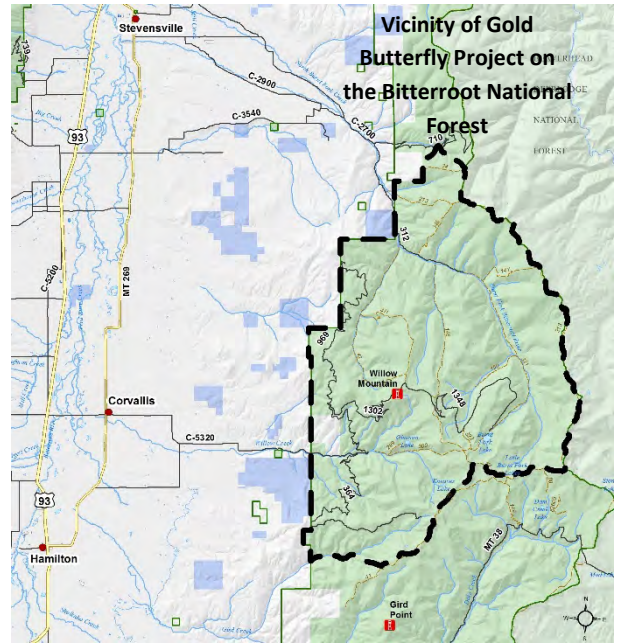


Overview of Gold Butterfly Project Area

Stevensville Ranger District, Bitterroot National Forest

- ❖ **Gold Butterfly Project – approximately 10,500 acres of treatment, 9,500 acres within area designated as insect and disease treatment area under Section 602 of the Healthy Forest Restoration Act**
- ❖ **Approximately 6,600 acres within Wildland Urban Interface (WUI)**
- ❖ **Vegetation management activities would be proposed on acres in Management Areas 1, 2, 3a, and 8a**
 - MA 1: Consists of lands suitable for timber management
 - MA 2: Consists of big-game winter range
 - MA 3a: Consists of productive forest lands available for timber harvest as long as visual quality objectives are met
 - MA 8a: Consists of scattered but mappable units of rockland, grassland, meadows, and forested upper subalpine habitat types
 - **Restoration opportunities will be *considered*** where they align with Forest Plan objectives and guidelines
- ❖ **Insects and disease have reduced the overall health and productivity of the stands in this area for some time**
 - Stands visited within the project area have had chronic **Douglas-fir bark beetle**, **dwarf mistletoe**, **western spruce budworm (WSB)** infestations and a recent **mountain pine beetle (MPB)** outbreak event
- ❖ **Presence and potential habitat for some **Threatened, Endangered and Sensitive (TES) Species & Management Indicator Species (MIS)** are known to occur in the potential project area**
 - **T&E:** Bull trout is a threatened species and is present. No known lynx presence.
 - **Sensitive** (*not complete lists for wildlife and botany*): westslope cutthroat trout, numerous wildlife species (e.g. gray wolf, western toad), whitebark pine
 - **MIS:** Elk, marten, pileated woodpecker
- ❖ **Water quality is an important issue in St. Clair Creek and Willow Creek. These two creeks are “functioning at unacceptable risk” and there is a TMDL on Willow Creek.**
- ❖ **Most of the project area contains a well-developed road system; primary Forest Service (FS) roads are in good condition**
 - Secondary FS roads would be brought up to standard as required to implement project activities
- ❖ **Implement decisions from the 2016 Bitterroot Travel Plan in the project area, especially where there are impacts to streams**



Overview of Potential Collaborative Process

What are the objectives of the collaborative process?

- Looking for participants who are interested in **engaging in a focused, results-oriented collaborative process** to develop and implement the project.
- Process will be **transparent, non-exclusive and include multiple interested persons representing diverse interests.**
- Open and respectful sharing by participants that will give the Responsible Official options and reasons to consider when developing the project and making the final decision.
 - The Responsible Official equitably values insights from each participating individual and organization and **will not rely solely on any single individual or group perspective** when making agency decisions; **not seeking a consensus decision/recommendation** from those who choose to participate.

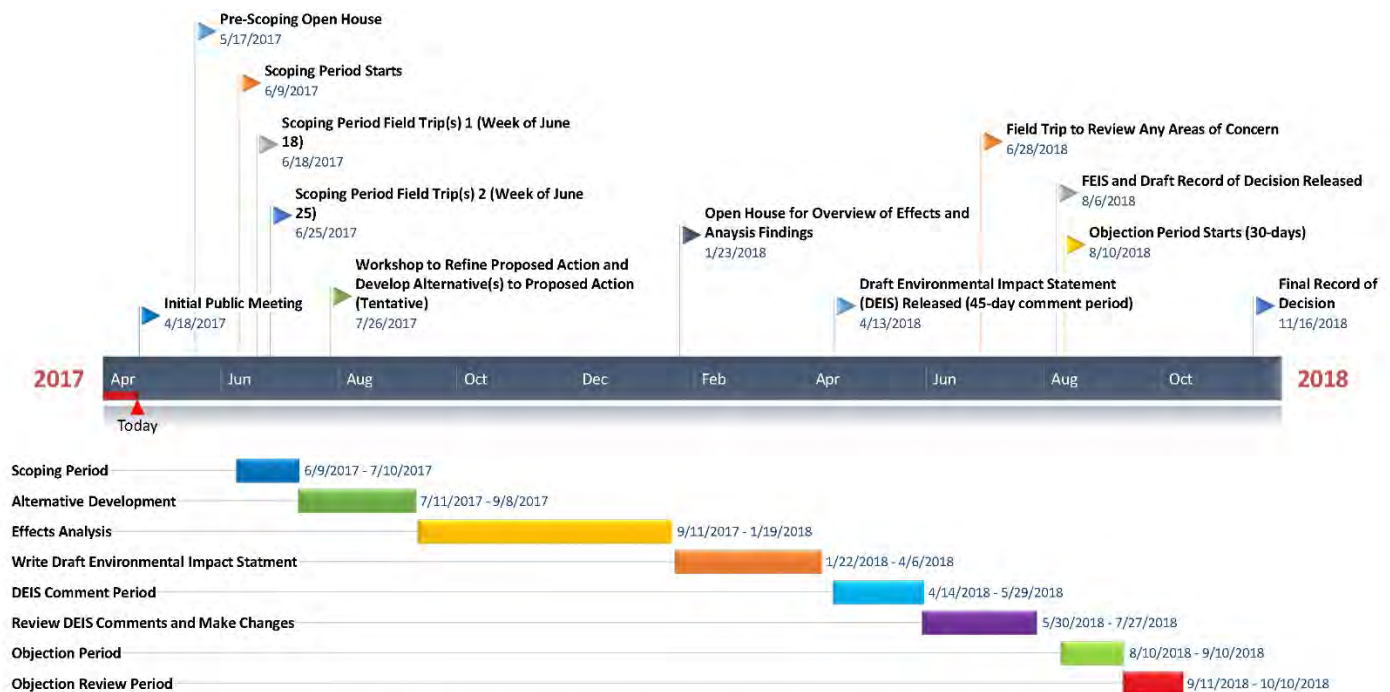
What is the role of participants in the collaborative process?

- Participants would **provide input for the Responsible Official to consider** regarding refinement of the purpose and need and proposed action and development of alternatives.
 - This includes helping define the treatments, design features/mitigation measures etc. as informed by local knowledge/experience and incorporation of best available science.
- Provide the rationale/reasoning behind suggestions or options presented.
- Assist with monitoring (based on needs identified during the collaborative process).

What constrains/guides the decision space throughout the collaborative process?

- The project **must be in compliance with all laws, regulations and policies**, to include the Forest Plan.
 - Applicable law/regulation/policy will be discussed during project development.
 - Forest interdisciplinary team members can provide clarification on the feasibility/legality of suggestions and options presented.

Gold Butterfly Potential Project Timeline*



*This timeline can be adjusted to accommodate the complexity of the proposed actions and issues/concerns that emerge throughout the collaborative process and/or analysis phase.