

Basalt to Gypsum Motorized Singletrack Legend

RTProposedTrail

- Proposed Motorcycle Trail
- Scheduled for Rehabilitation

RTTrails

- Foot and Horse (Animal)
- Licensed Motorized Only
- Licensed and Unlicensed Allowed
- Managed Under Special Use Permit
- Mechanized (Bicycles)
- Motorized Vehicles less than 50 inches width (ATV)
- Two Wheeled Vehicles (Motorcycles)
- Decommissioned

RTManagementAreas

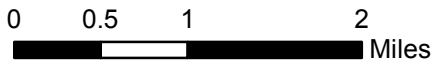
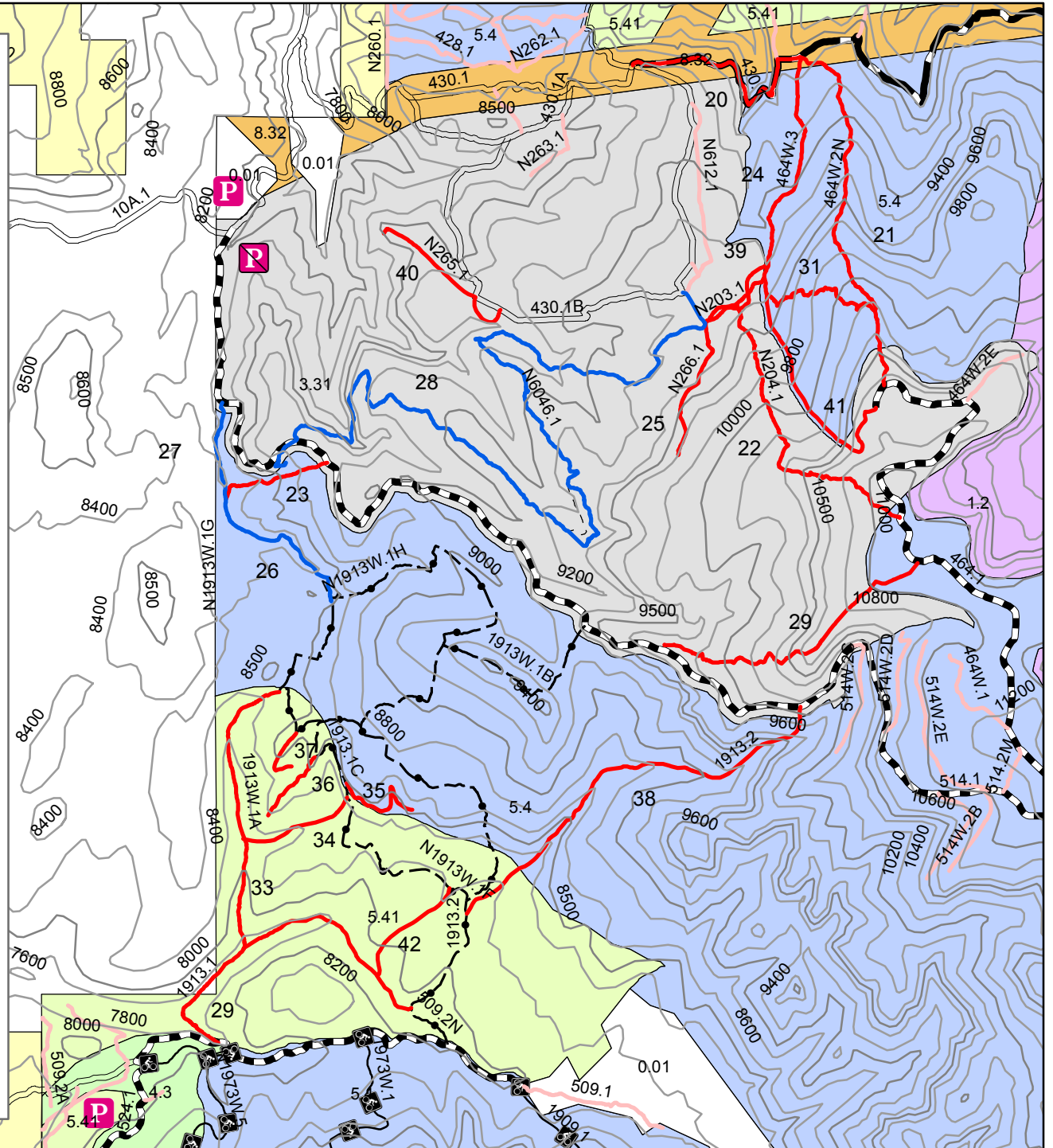
- 0.01 Non-NFS
- 1.2 Recommended Wilderness
- 3.31 Backcountry Recreation, Year-Round Motorized
- 4.3 Dispersed Recreation
- 5.4 Forest Flora & Fauna Habitats
- 5.41 Deer & Elk Winter Range
- 8.32 Designated Utility Corridor, existing & poten

RTLandStatus

- BLM
- PRI
- STA

RT_Parking

- Parking
- No Parking



1:70,000

